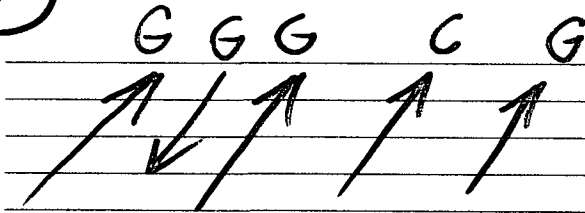


DUELING BANJOS

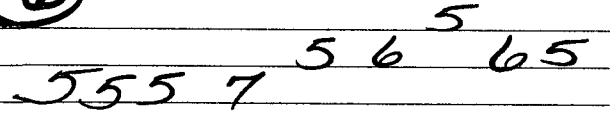
banjosally.com

#1



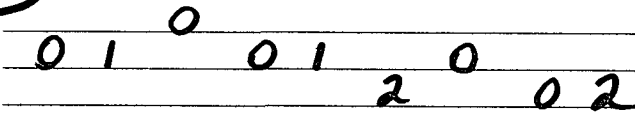
Thumb Strums.

#6



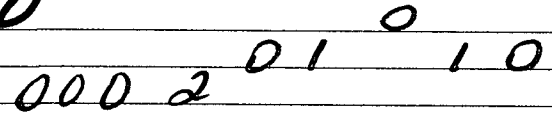
T T T T 1 1 m 1 1

#2



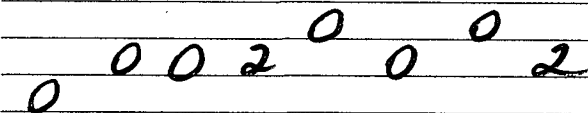
1 1 m 1 1 T 1 T T

#7



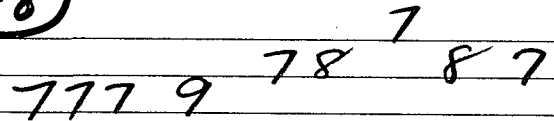
T T T T 1 1 m 1 1

#3



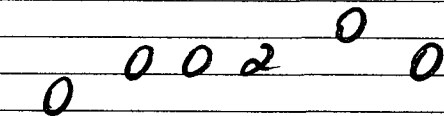
T T T T 1 T 1 T

#8



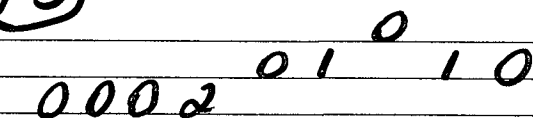
T T T T 1 1 m 1 1

#4



T T T T 1 T

#5



T T T T 1 1 m 1 1

★ "Duel" #1 through #8 with a partner - then return to the top playing #1 through #4 again, but faster! End with #9 (next page).

DUELING BANJOS - FAST PART

banjosally.com

#9

Handwritten musical notation for 'Dueling Banjos - Fast Part' on a five-line staff. The notation includes various fingerings and techniques:

- Measure 1:** G-clef, notes 0, 1, 0 with fingerings M, I, M.
- Measure 2:** C-clef, notes 0-2, 1, 2, 0 with fingerings T-H, I, M, T.
- Measure 3:** notes 2, 1, 2, 2 with fingerings M, I, T, M.
- Measure 4:** notes 2-0, 1, 2 with fingerings T-P, I, T, M.
- Measure 5:** notes 0, 2, 2 with fingerings T, I, T, M.
- Measure 6:** G-clef, notes 0, 2 with fingerings T, M.
- Measure 7:** notes 2-4, 0, 0 with fingerings T, I-SL, M, I.
- Measure 8:** notes 2, 0 with fingerings T, M.
- Measure 9:** notes 0, 0, 0 with fingerings T, M, T, M.
- Measure 10:** notes 2, 1, 0 with fingerings T, M, T, M.
- Measure 11:** D-clef, notes 0, 0 with fingerings T, M, M.
- Measure 12:** notes 2-3, 0 with fingerings I-H, T, M.
- Measure 13:** notes 3, 2, 0 with fingerings T, I, M, T.
- Measure 14:** notes 0, 0, 3-2 with fingerings M, I, T-P, M.
- Measure 15:** G-clef, notes 0, 0 with fingerings T, M.
- Measure 16:** notes 2-4, 0 with fingerings T, I-SL, M, I.
- Measure 17:** notes 2, 0 with fingerings T, M, T.